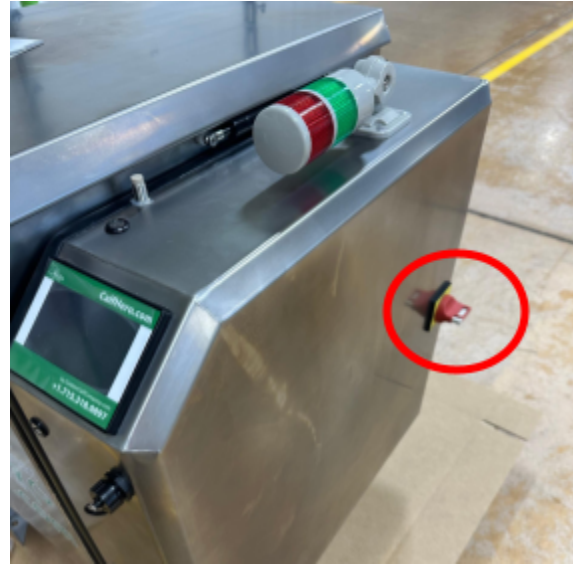


# HT\_ Manually Retrieving Data Logs (Calf Hero X)

## Step 1 - Turn off unit

Turn off the red on/off switch on the side of the unit.



## Step 2 - Open Service panel

Use a large screw driver to turn all three locks clockwise.  
Open the service panel by gently lifting up the door.



## Step 3 - Locate the Micro SD card

Locate the Micro SD card in the top portion of the controller.

**Gently push down on the SD card** using your fingernail.



When you let go, the card will pop up.



Make sure to note the orientation.  
Then gently take the Micro SD card out.

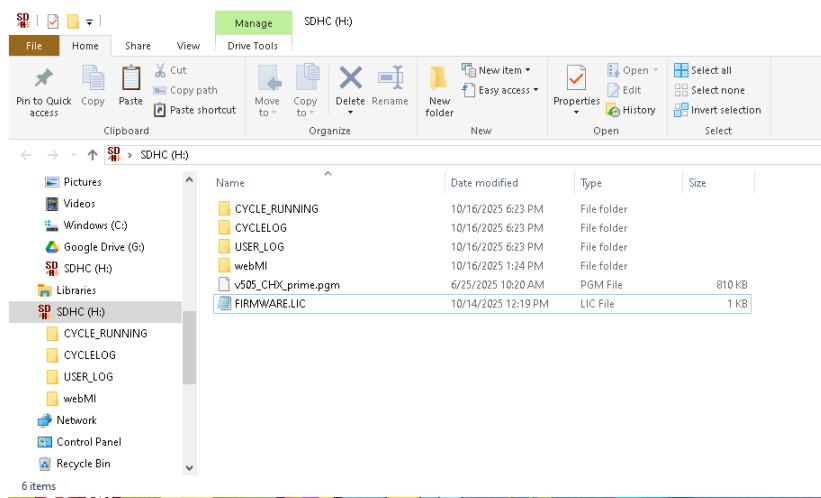


# Step 4 - Download & Email files

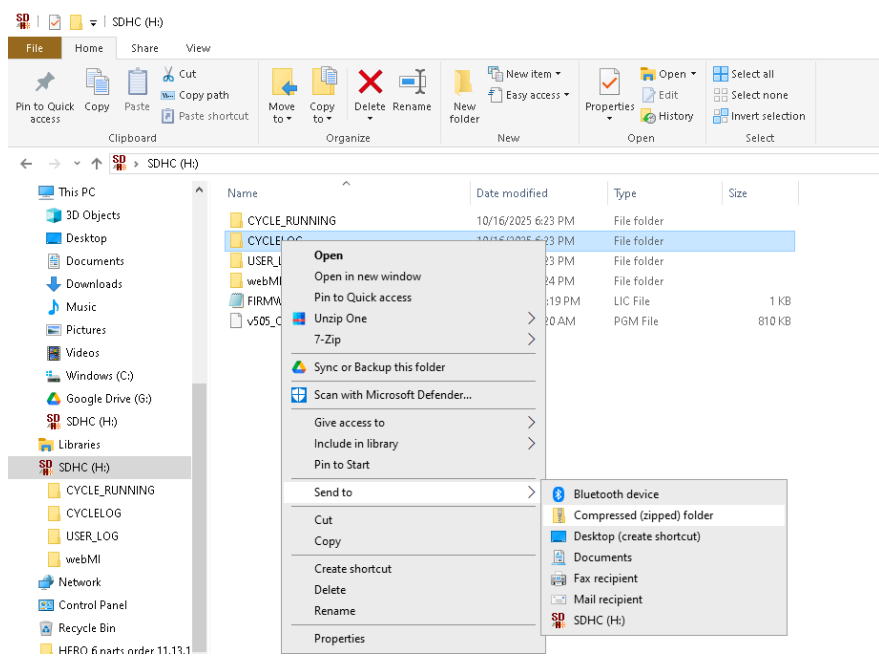
If your computer doesn't have a Micro SD card slot, use an SD card adapter or Micro SD card USB. Plug into your Windows computer and open File Explorer.



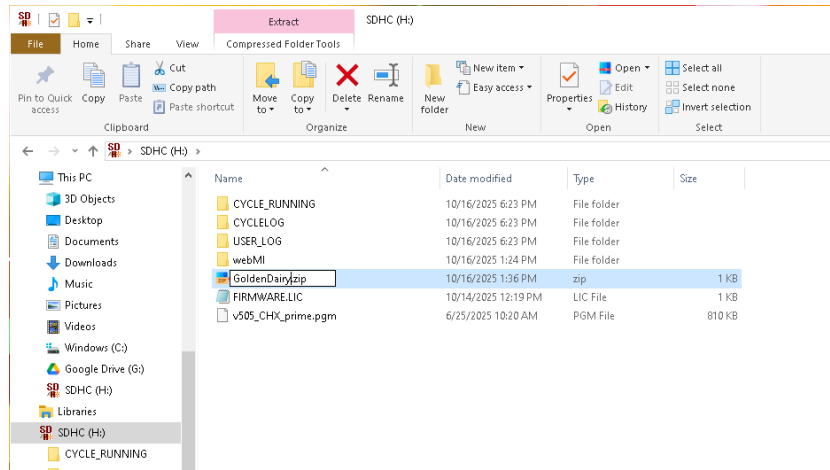
In the file explorer, find the SD card and open the contents. You should see a folder called Cycle Logs



Right click on the CYCLELOGS folder > Send To>Compressed zipped folder



The folder will be created on the SD card, please rename it to the name of your dairy. Make sure to leave the .zip as part of the file name.

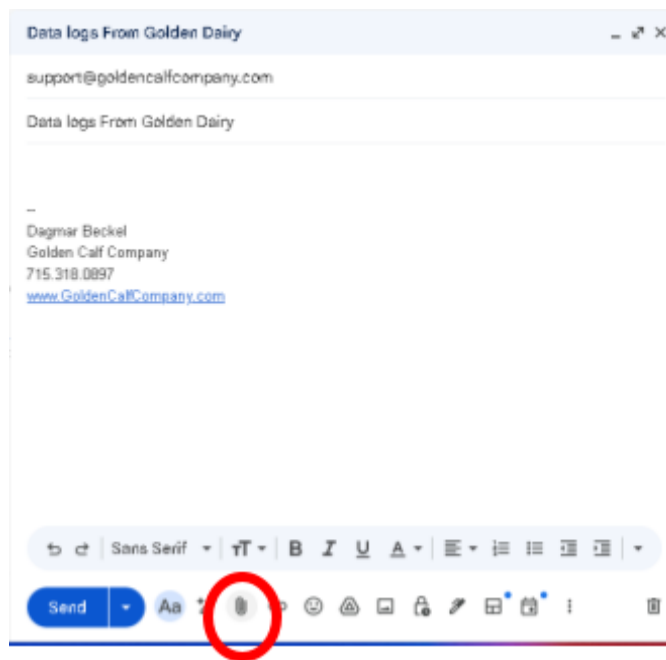


Start a new email and select an attachment by clicking on the paperclip icon or attachment button.

A new window should open up for you to select the file, navigate to the SD card folder and select the newly created zip folder.

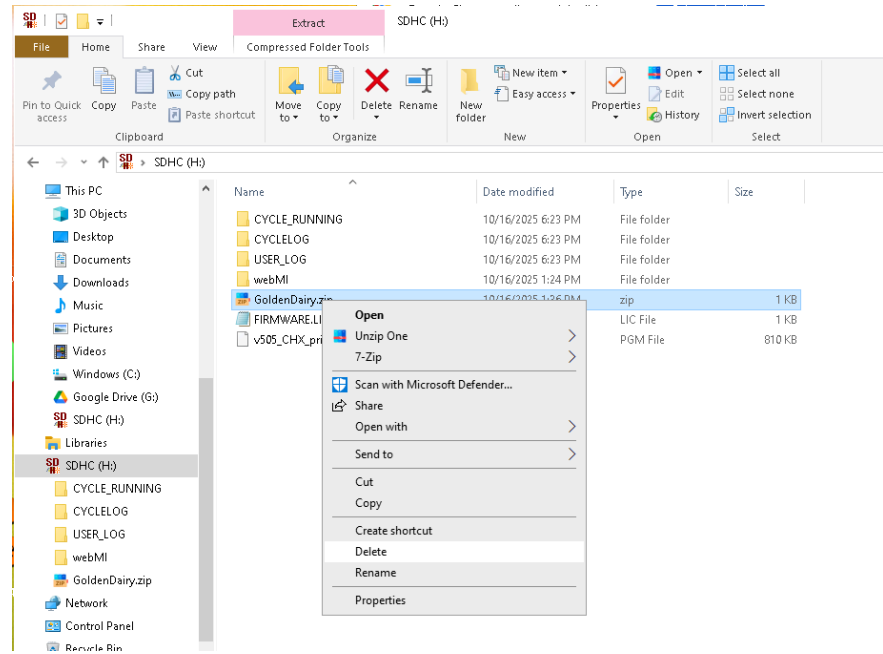
Send to [support@goldencalfcompany.com](mailto:support@goldencalfcompany.com)

Check your sent/outbox that the message sent with the attachment.



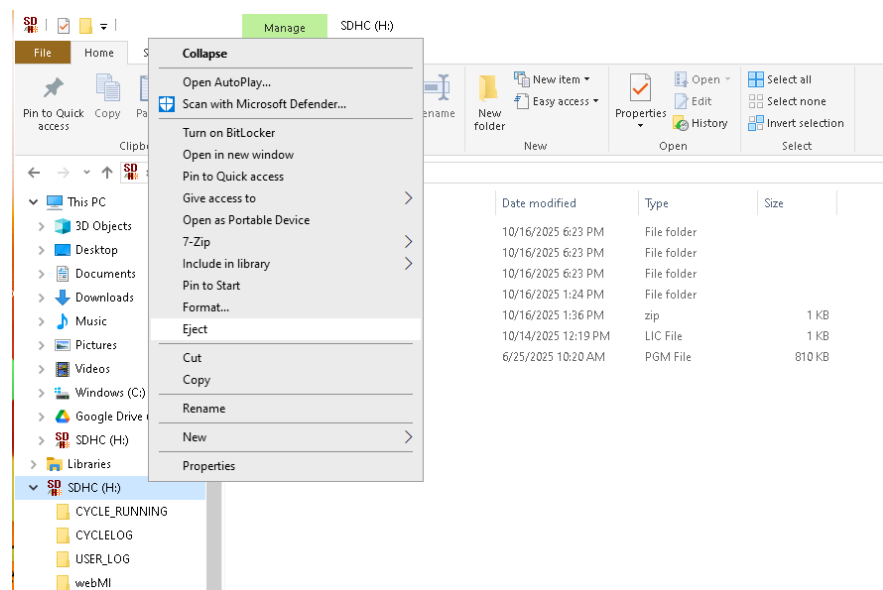
In the file explorer, delete the zip folder from the SD card by right clicking the folder and selecting delete.

When it asks to confirm, say yes.



In the file explorer, right click on the SD card and select "Eject". You should get a message that it is now safe to remove the SD card.

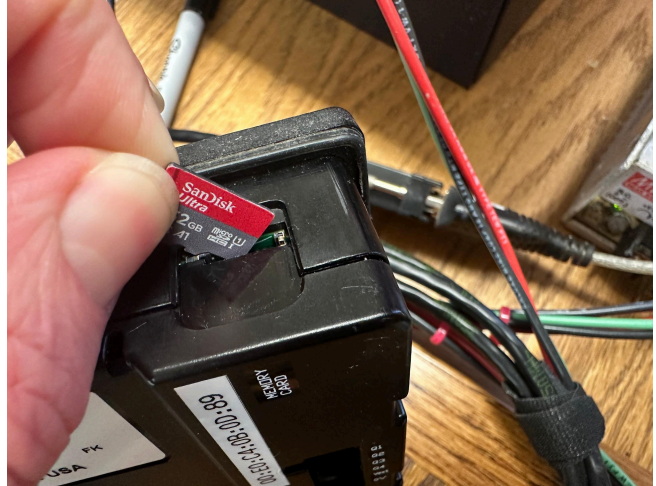
Take the SD card out and place it back in the controller.



## Step 5 - Plug the SD card back in the controller

Insert the Micro SD card into the SD card slot in the top of the controller.

Be careful to place it exactly the same way as the original one. It should slide against the green plate. The card is facing towards you.



Make sure to push the card in all the way. You should be able to feel the little click. When installed properly, it should be flush with the controller.



## Step 6 - Lock the service door and power on

Lock all three locks, making sure that they are vertical to the ground and in line with each other.

Power the unit back on by turning on the on/off switch.

Wait to make sure your unit powers on properly.

